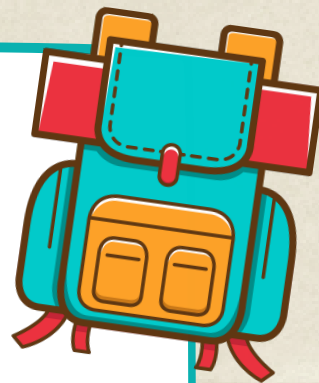


# Camp Until a Cure

## Packing Checklist



Label All Items With Camper's Name

### BASICS

- Water Bottle
- Shower Towel
- Pool Towel
- Sunscreen
- Bug Spray
- Toiletries
- Flashlight
- Envelopes/Stamps (Optional)

### MEDICAL

- All Pump Supplies
- All CGM Supplies
- \*Please pack more than enough supplies for the week
- Cell Phone or Receiver for CGM
- Device Chargers
- Any Prescription or OTC Medications

### SUPPLIED BY CAMP

- X Insulin
- X Pen Needles/Syringes
- X Testing Supplies
- X Low Treatments

### CLOTHES

- Shirts
- Sweatshirt/Jacket
- Shorts
- Pants
- Underwear
- Socks
- Pajamas
- Swimsuit
- Laundry Bag

### BEDDING

- Pillow
- Sleeping Bag or Twin Sheets
- Blanket

### SHOES

- Tennis Shoes
  - Shower/Pool Shoes
  - Water Shoes for Creek Walk
- \*All shoes except shower shoes must be closed toed

### PLEASE LEAVE AT HOME

Laptops, Tablets, Smartwatches, Sports Equipment, Swim Fins/Masks/Snorkels, Food, Candy, Hairdryers, Curling Irons, Tools/Knives, Matches, Fireworks/Sparklers, Cigarettes, Vapes, Valuables. Tobacco/alcohol use and flammables are not allowed on DYFI property. DYFI is not responsible for any items lost, stolen, or left at camp.

Please remember when packing for camp, pack old clothes. The kids will be taking creek hikes, option to play paintball, and other fun activities. Please pack enough clothes and supplies for the entire week. Kids will not be able to use the laundry facility.

